

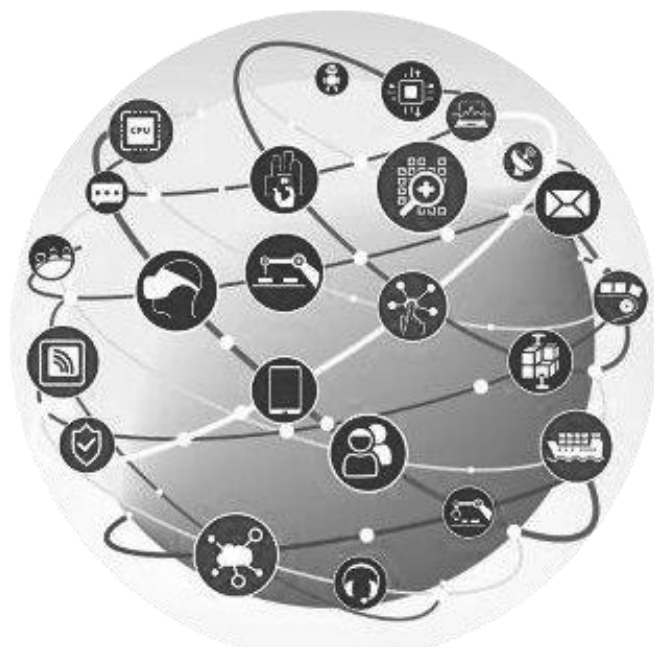
TR Scan

An Adaptive Range of Products to Meet Client Specifications

TR Scan SOLUTION

- ✓ Ready Industry 4.0
- ✓ Turnkey solutions
- ✓ Dedicated to a specific measurement
- ✓ Palletization possible
- ✓ Loaded by robot
- ✓ Completely automatic
- ✓ Can be used 24/7
- ✓ Export of values
- ✓ Unyielding X/Y table

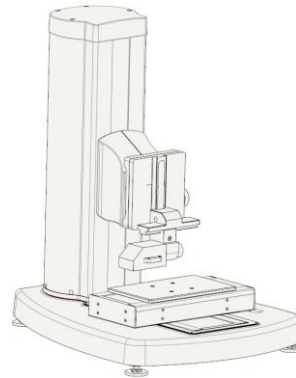
Vers l'Industrie 4.0



INTRODUCTION

Trimos has drawn on its vast experience in mechanics to develop a specific solution to suit the needs of international clients.

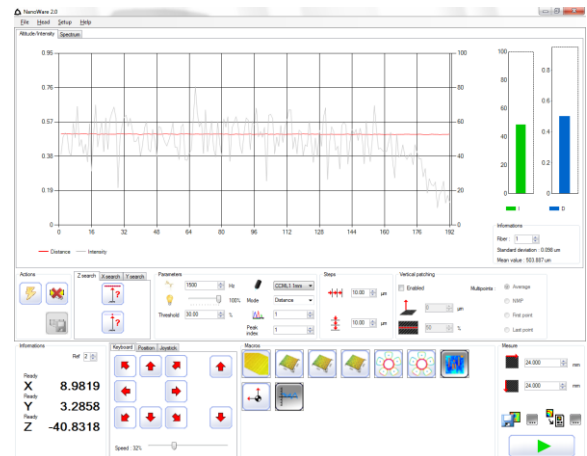
The mechanical development team can visualise the specific mechanical construction from the start of the project, meaning clients have the option of a total integration according to their needs.



The wide range of sensors meets all your contactless measurement needs. The combination of the TrScan with an optic with a large numerical aperture enables measurements on a 1 mm. distance with a 35-nanometre resolution and numerical aperture of +/- 45 degrees.

PROGRAMME

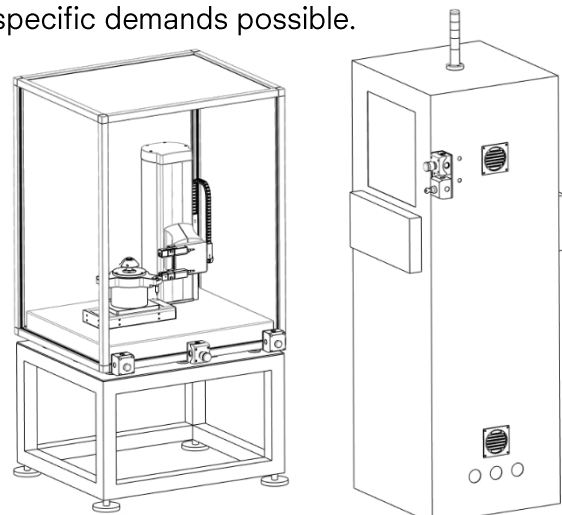
The object-oriented software enables fast responses to any specific requirements. The electronics and software development team is responsive to these requirements and implements adaptive solutions. The integration of all roughness analysis functions allows a fully automatic use without human intervention.



Our combination Product Manager / mechanics, electronics and software R&D teams make the understanding and follow up of specific demands possible.

Our TR SCAN SOLUTION can be fitted with a robot for the automatic loading of parts to be measured.

We can therefore offer an entirely automatic solution which operates 24/7 without human interference.



APPLICATIONS

Static measurements with control over environmental vibrations

Marble base.

Special table

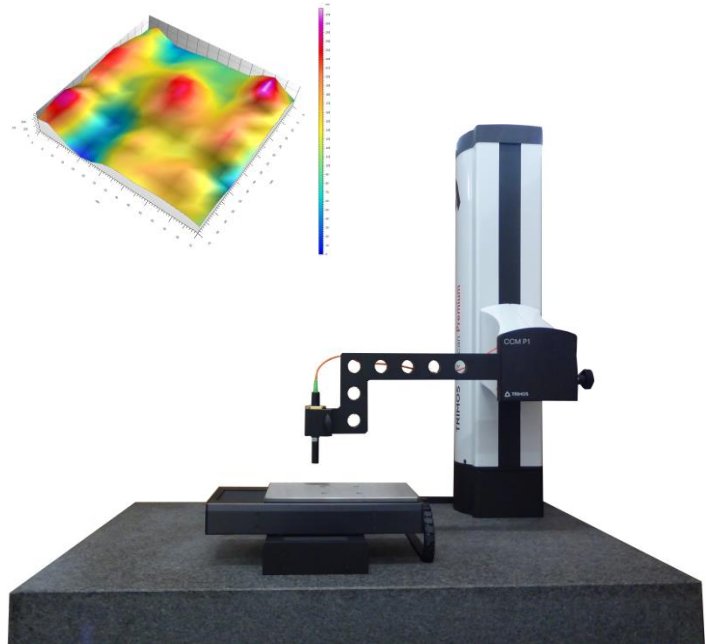
- Mechanical flatness correction, max. 1 μm
- Software flatness correction, max. 300 nm
- Maximum weight of the specimen 20kg

Laterally shifted measuring arm 450 mm.

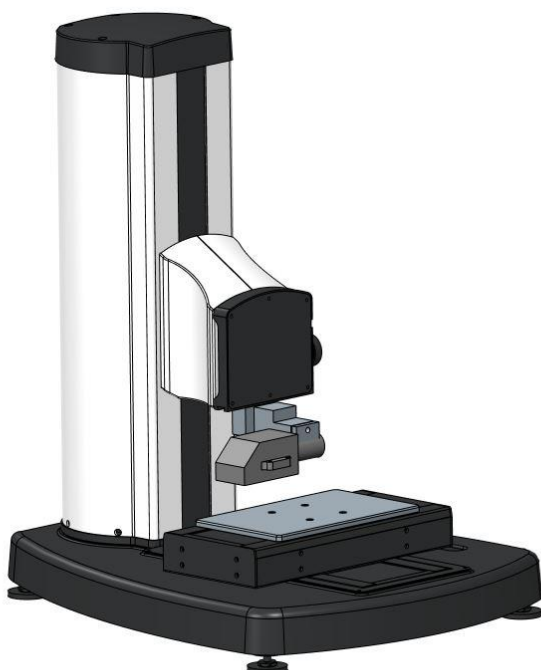
Dynamic measurement.

Static measurements with noise reduction.

Double channel spectrometer for measurement security.



Large-scale internal measurements



Standard mechanical base.

CCMP2 pin head

- Sensor with 2 mm measuring range and aperture at 90°.
- Possible transversal displacement of the sensor.
- 360° orientation.

Fully automatic and robotised measurement



Marble base.

Special table

- Centring system for robotic arm

Anti-dust protection.

Automatic or manual selection.

Data export.

Trimos S.A.

Av. de Longemalle 5
CH-1020 Renens, Switzerland
Tel: +41 21 633 01 01
info@trimos.ch
www.trimos.com

