

Labconcept **Nano**

For laboratories with the highest standards



1.

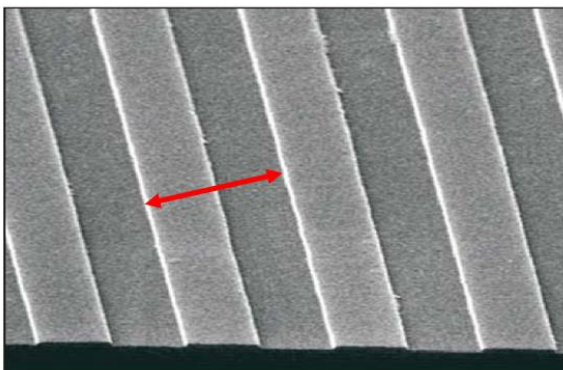
INTRODUCTION

Nanometric precision becomes a reality in the most sophisticated laboratories, those which are at the forefront of modern measurement technology.

Trimos sets a new metrological benchmark, offering a perfect combination of know-how and the latest available technology.

Thanks to perfect human-machine integration, the Labconcept Nano can realise all types of measurements without human intervention, ensuring extremely low measurement uncertainties.

Integrated software facilitates bidirectional communication with the majority of programs on the market. The integration of measurement processes enables complete automation.



512 nanometre



The combination of the ABBE principle and a high-resolution measuring scale achieves a real nanometric resolution.

The Labconcept **NANO** is as precise as an infrared interferometry measuring laser (wavelength: 623 nanometres).

Its high-performance scale, made from Zerodur ceramic glass and with an Optodur phase grating with graduations of 512 nanometres, is impervious to exterior influences such as humidity, atmospheric pressure, air temperature, etc.

The position deviation in a signal period, referred to as the microlinearity error, is +/- 0.001 μm or +/-1 nanometre.

The Labconcept **NANO** is one of the most precise instruments in its category in the world, thanks to Trimos outstanding mechanics and expertise.

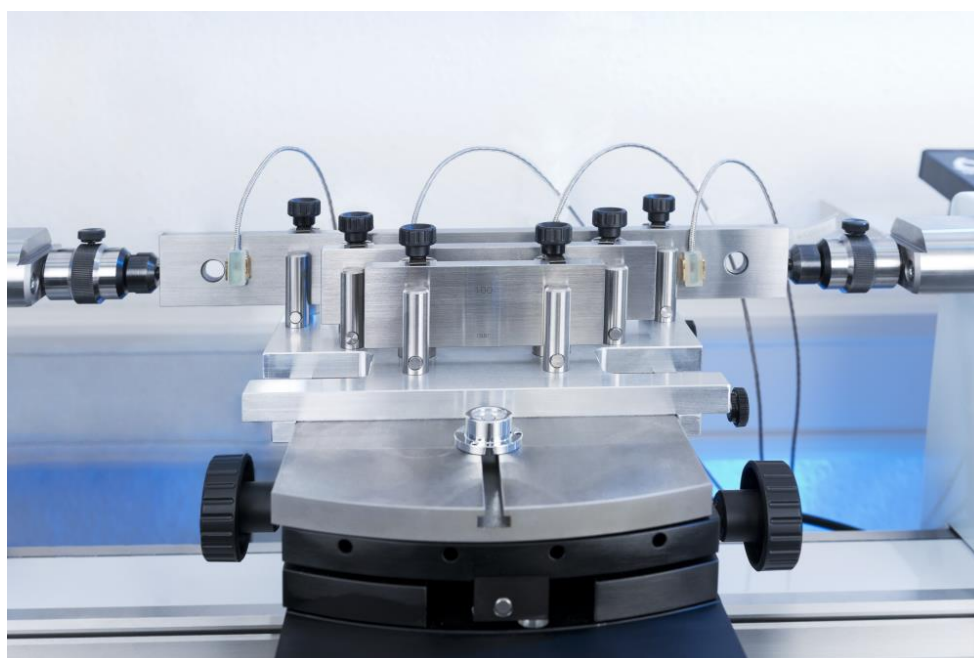
2.

MEASUREMENTS

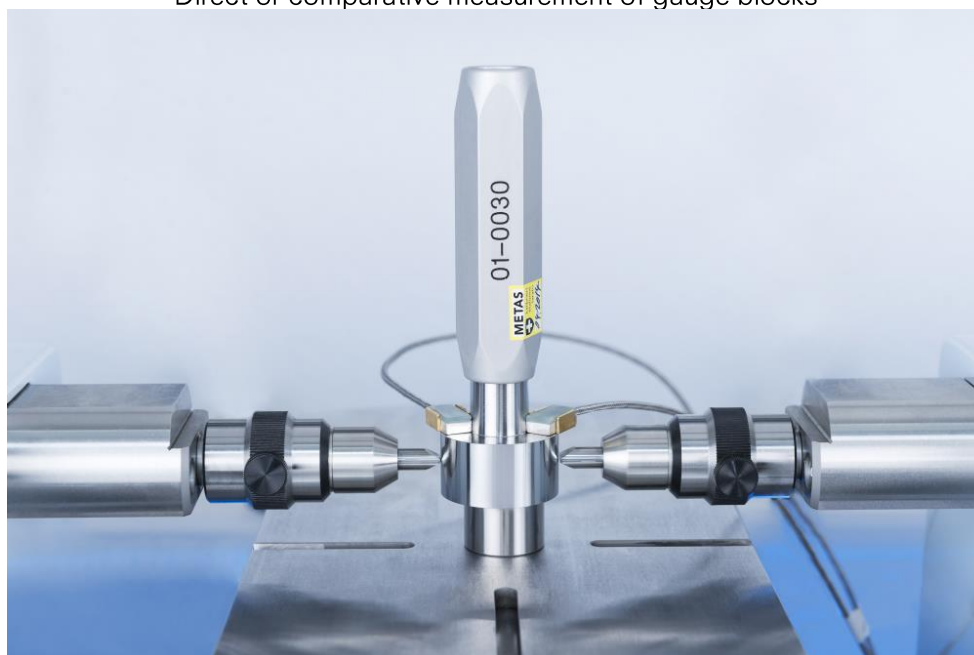
With a large range of accessories, the Labconcept **NANO** enables high-precision measurements. Our most sophisticated and demanding clients are certified by leading certification bodies, including:



Deutsche
Akkreditierungsstelle
D-K-15048-01-00



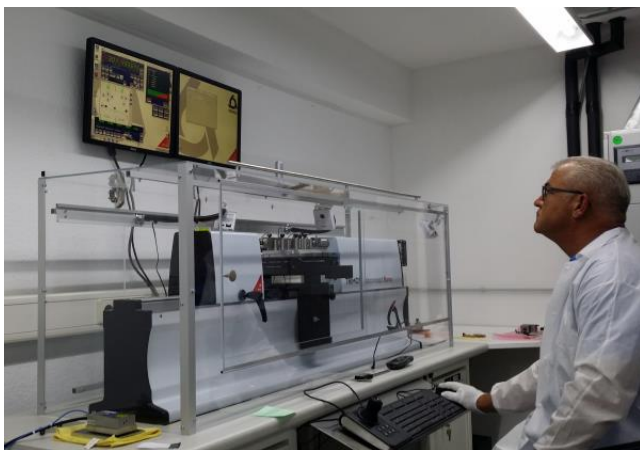
Direct or comparative measurement of gauge blocks



Direct or comparative measurement of plug gauges

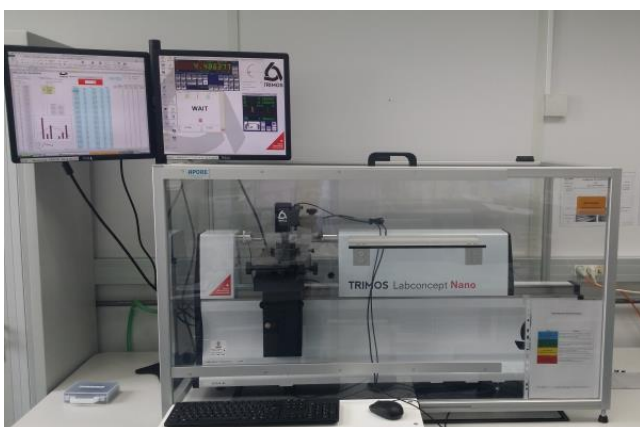
3.

REFERENCES



melutec metrology
calibration & services

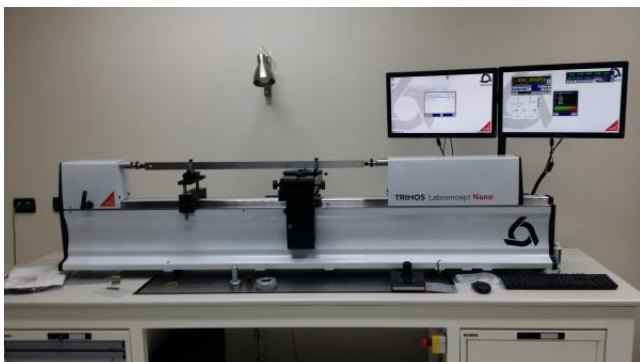
Melutec Metrology GmbH
Contact: Welle Kai
Helmholtzstrasse 11
D-71573 Allmersbach im Tal
Telephone : +49 (0)7191 367820



DELPHI

Innovation for the Real World

Delphi
Contact: Pillon François
9 Bd de l'Industrie
F-41042 Blois
Telephone : +33(2) 54 55 41 23



mta
Laboratorio di taratura e
gestione strumentazione

MTA Srl
Contact: Antonio Pennacchia
Via dei Mestieri 8
IT -20863 Concorezzo (MB)
Telephone : +39 (039) 6203063

A complete list is available on request.

Trimos S.A.
Av.de Longemalle 5
CH-1020 Renens
T. +41 21 633 01 01
info@trimos.ch
www.trimos.com

